



Innovation to excellence

Direct drive oil-injected rotary screw
Air Compressors
Fixed and variable speed

WC Range - 7.5-160 kW

Winbell Compressors Pvt. Ltd.

WC Range Air Compressors

Reliability & Sustainability

1

Electric Motor

Special Modified Electric Motor, Compressor package is driven by an industry standard TEFC (totally enclosed fan cooled) with IP 54 protection, squirrel cage motor, ensure highest quality standards for winding and insulation High Quality for continues and trouble free operation.

2

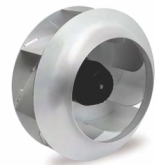
Heavy Duty Air Intake Filter

- Protects the Compressor Components by removing the dirty particles.
- Guarantees Longer Lifetime of Compressor Components

3

Turbo radial fan

- High flows.
- Low noise level.
- Compact design.



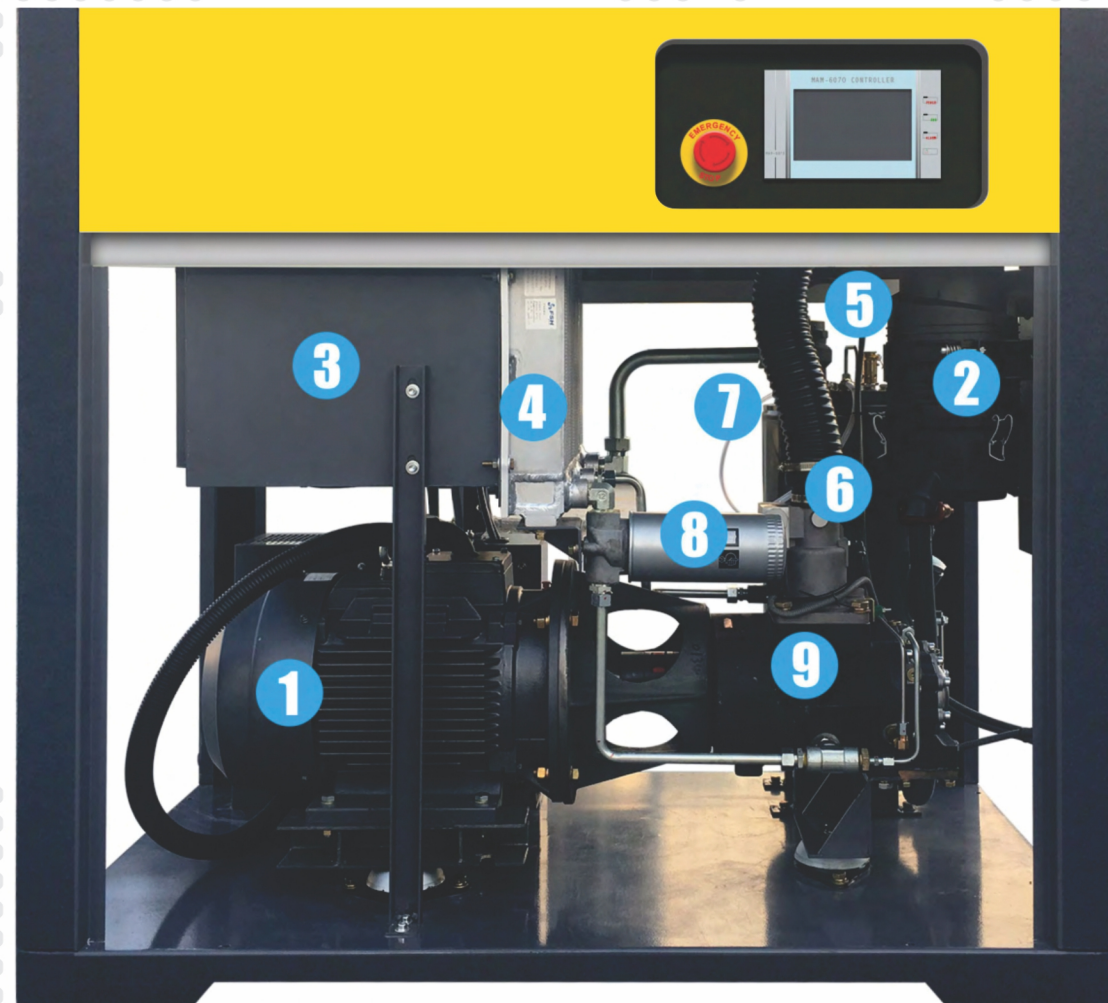
4

Separate Oil Cooler and After Cooler

- Low outlet temperature, ensuring long oil lifetime.
- Large surface to ensure low operating temperature.

Intelligent control System

- HD colorful touching screen controller.
- Monitoring features include warning indications, maintenance scheduling and machine's condition.



5

Safety Relief Valve

- Maintenance System Pressure.
- Ensuring compressor to run in safe and efficient status.

6

Air Intake Valve

Air intake Valve regulates the amount of air sucked in the compressor. By opening and closing air intake, the capacity of compressor is regulated.

7

Oil Air Separate System

- Ensuring low pressure drop.
- Efficient separation, low oil content
- Well grounded for static electricity.

8

Oil Filter

- High Filtering efficiency.
- Oil Circuit protection.
- Long Lifetime and low maintenance cost.

9

High Efficiency Airend

- High output aimed with advance profile rotors.
- Equipped with premium quality bearing (such as SKF).

Direct Drive Screw Air Compressor

| Model | Working pressure | | Capacity(FAD) | | Motor Power | | Noise Level | Outlet | Weight | Dimension(mm) | | |
|-----------|------------------|-----|---------------|---------------------|-------------|-----|-------------|-----------|--------|---------------|------|------|
| | Bar | Psi | Cfm | m ³ /min | Hp | Kw | dB | diameter | kg | L | W | H |
| WC-7.5 AZ | 7 | 102 | 42 | 1.1 | 10 | 7.5 | 63 | G 3/4 " | 400 | 890 | 560 | 840 |
| | 8 | 116 | 39 | 1.1 | | | | | | | | |
| | 10 | 145 | 35 | 1 | | | | | | | | |
| | 12 | 175 | 28 | 0.8 | | | | | | | | |
| WC-11 AZ | 7 | 102 | 68 | 1.9 | 15 | 11 | 64 | G 3/4 " | 420 | 1050 | 690 | 1080 |
| | 8 | 116 | 57 | 1.6 | | | | | | | | |
| | 10 | 145 | 53 | 1.5 | | | | | | | | |
| | 12 | 175 | 46 | 1.3 | | | | | | | | |
| WC-15 AZ | 7 | 102 | 95 | 2.6 | 20 | 15 | 65 | G 3/4 " | 480 | 1050 | 690 | 1080 |
| | 8 | 116 | 85 | 2.4 | | | | | | | | |
| | 10 | 145 | 74 | 2.1 | | | | | | | | |
| | 12 | 175 | 64 | 1.8 | | | | | | | | |
| WC-18 AZ | 7 | 102 | 118 | 3.3 | 25 | 18 | 65 | G 1 " | 550 | 1350 | 780 | 1250 |
| | 8 | 116 | 110 | 3.1 | | | | | | | | |
| | 10 | 145 | 95 | 2.6 | | | | | | | | |
| | 12 | 175 | 85 | 2.4 | | | | | | | | |
| WC-22 AZ | 7 | 102 | 138 | 3.9 | 30 | 22 | 65 | G 1 " | 590 | 1350 | 780 | 1250 |
| | 8 | 116 | 124 | 3.5 | | | | | | | | |
| | 10 | 145 | 110 | 3.1 | | | | | | | | |
| | 12 | 175 | 95 | 2.7 | | | | | | | | |
| WC-30 AZ | 7 | 102 | 195 | 5.5 | 40 | 30 | 67 | G 1-1/2 " | 850 | 1420 | 900 | 1425 |
| | 8 | 116 | 180 | 5.1 | | | | | | | | |
| | 10 | 145 | 163 | 4.6 | | | | | | | | |
| | 12 | 175 | 138 | 3.9 | | | | | | | | |
| WC-37 AZ | 7 | 102 | 245 | 6.9 | 50 | 37 | 67 | G 1-1/2 " | 1000 | 1420 | 900 | 1425 |
| | 8 | 116 | 219 | 6.2 | | | | | | | | |
| | 10 | 145 | 198 | 5.6 | | | | | | | | |
| | 12 | 175 | 173 | 4.9 | | | | | | | | |
| WC-45 AZ | 7 | 102 | 292 | 8.2 | 60 | 45 | 67 | G 1-1/2 " | 1050 | 1750 | 1100 | 1700 |
| | 8 | 116 | 265 | 7.5 | | | | | | | | |
| | 10 | 145 | 247 | 7 | | | | | | | | |
| | 12 | 175 | 212 | 6 | | | | | | | | |
| WC-55 AZ | 7 | 102 | 380 | 10.7 | 75 | 55 | 73 | G 2 " | 1500 | 1750 | 1100 | 1700 |
| | 8 | 116 | 353 | 10 | | | | | | | | |
| | 10 | 145 | 318 | 9 | | | | | | | | |
| | 12 | 175 | 283 | 8 | | | | | | | | |
| WC-75 AZ | 7 | 102 | 510 | 14.4 | 100 | 75 | 74 | DN 50 | 1750 | 1750 | 1100 | 1700 |
| | 8 | 116 | 459 | 13 | | | | | | | | |
| | 10 | 145 | 417 | 11.8 | | | | | | | | |
| | 12 | 175 | 371 | 10.5 | | | | | | | | |
| WC-90 AZ | 7 | 102 | 605 | 17.1 | 120 | 90 | 78 | DN 50 | 2100 | 2150 | 1250 | 1670 |
| | 8 | 116 | 551 | 15.6 | | | | | | | | |
| | 10 | 145 | 498 | 14.1 | | | | | | | | |
| | 12 | 175 | 452 | 12.8 | | | | | | | | |
| WC-110 AZ | 7 | 102 | 760 | 21.5 | 150 | 110 | 82 | DN 80 | 3800 | 2600 | 1450 | 1800 |
| | 8 | 116 | 707 | 20 | | | | | | | | |
| | 10 | 145 | 629 | 17.8 | | | | | | | | |
| | 12 | 175 | 558 | 15.8 | | | | | | | | |
| WC-132 AZ | 7 | 102 | 894 | 25.3 | 175 | 132 | 82 | DN 80 | 3950 | 2600 | 1450 | 1800 |
| | 8 | 116 | 855 | 24.2 | | | | | | | | |
| | 10 | 145 | 770 | 21.8 | | | | | | | | |
| | 12 | 175 | 654 | 18.5 | | | | | | | | |
| WC-160 AZ | 7 | 102 | 1014 | 28.7 | 200 | 160 | 82 | DN 80 | 4130 | 3000 | 1900 | 1950 |
| | 8 | 116 | 975 | 27.6 | | | | | | | | |
| | 10 | 145 | 905 | 25.6 | | | | | | | | |
| | 12 | 175 | 760 | 21.5 | | | | | | | | |

* Variable frequency drive option available

Notes : Power supply: 415V/50Hz/3ph/3wire
Flow capacity: Value converted to inlet conditions
Air inlet conditions: 1 bar, 20 °C, 0%

Winbell Compressors Pvt. Ltd.

Corporate Office & Manufacturing Unit :

Plot No.99, Panchratna-II, Industrial Park, Ahmedabad - Dholka Highway,
(Kamod Circle-Dholka Road) Nr. S. P. Ring Road, Ahmedabad-382425.

Contact : +91 73831 07336 / +91 98980 57396

✉ : sales@winbellcompressor.com / info@winbellcompressor.com



www.winbellcompressor.com